



# DECK CARGO BARGE

## Specifications

### GENERAL

Type Of Vessel	Deck Cargo Barge
Typical Application	Coal, Sand, Nickel, Log, etc
Classification	BKI +A 100 P

### DIMENSIONS

Length Over all	230	250	270	300	330	(FT)
Breadth	64	80	80	80	96	(FT)
Depth	14	14	16	18	18	(FT)
Total tank	24	27	27	30	44	(Tanks)
Draft	3.67	3.28	3.81	4.28	4.12	(m)
Deadweight max.	3,612	4,758	5,897	7,518	9,343	(T)
Deckload	5.3	7	9	8	8	(m <sup>2</sup> )
Cargo Area	1,066.53 m <sup>2</sup>	1,499.69 m <sup>2</sup>	1,549.79 m <sup>2</sup>	1,801.47 m <sup>2</sup>	2,442.5	(m <sup>2</sup> )
Sideboard	8	10	10	12	12	(FT)

### GENERAL EXECUTION

Towing Brackets	1 on PS, 1 on STBD , forward deck
Draught Marks	Fixed on fore, mid and aft on PS STBD every 200mm.
Manholes	Bolted manholes type-c (sunken)
Bulwark	1m height
Pusher Box	4 pcs

### COROSIVE PREVENTION

Coating System	Anti-fouling and customized coats options
Aluminium anode	10kg

### OPTIONAL EQUIPMENT

Winches	Windlass house, anchor pocket or anchor rack 32mm, 34mm, 38mm, etc
Anchor	Stockless Anchor 700kg, 1200kg, 1400kg, 2000kg.
Anchor Chain	4 length @ 27.5m
Shackle	17 Ton - 4pcs, 25 Ton - 1 pcs
Fendering	Tire fender and semi-long link chain Steel fender (gunwale) Pipe fender ( optional)
Navigation Light	Anchor light
Rampdoor	9m x 4m , 11m x 4m, etc.
Stanchion	4m height ( for logs)

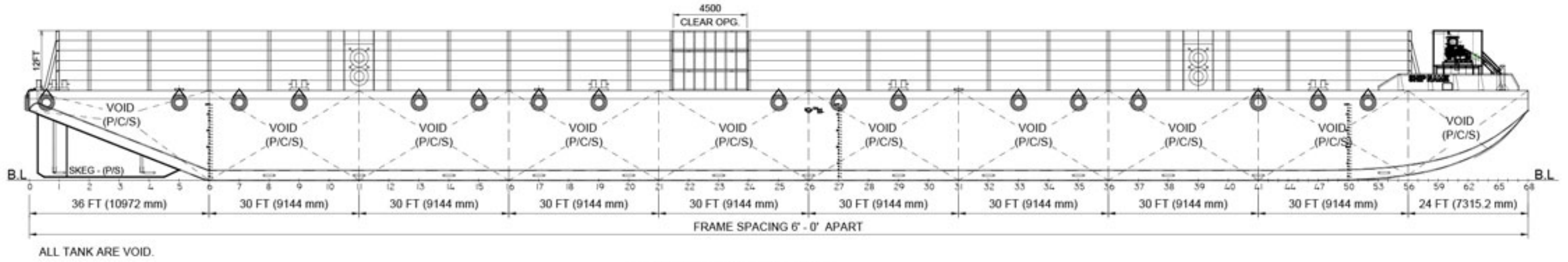
### MOORING

Single Bollard	1 at aft, 2 at forward
Double Bollard	8 DB , 10 DB, 12 DB.etc for PS and STBD
Mooring PP rope	8 " , 2 length @ 40m 6" , 2 length @ 40m

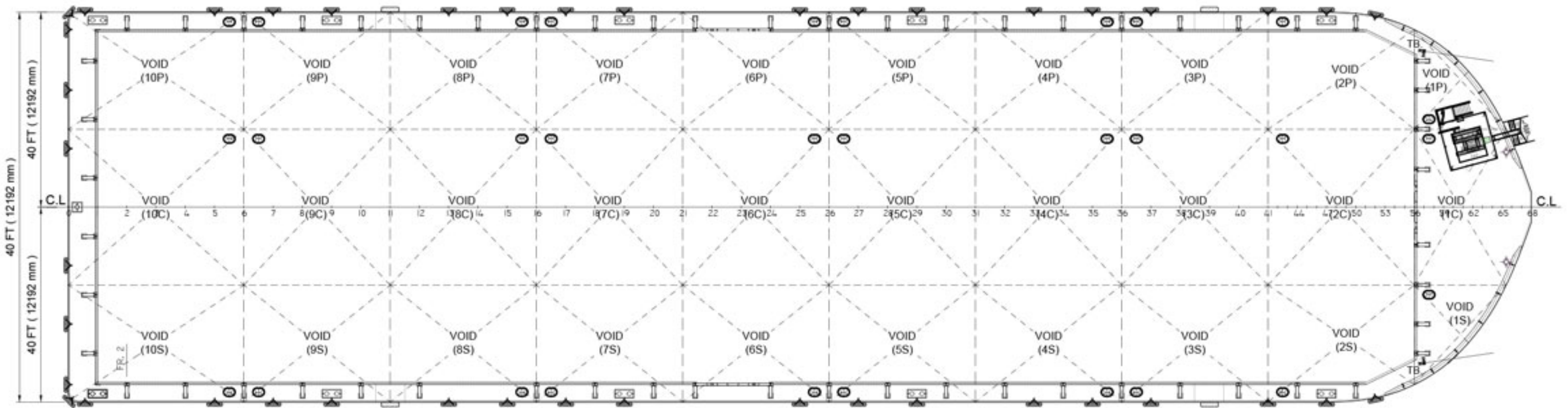
\* The above calculation are only preliminary design information.  
\* Image shown for reference purpose.



# General Arrangement



OUTBOARD PROFILE



MAIN DECK PLAN