

# GREAT SHIPS GREAT VALUE



# Great Ships, Great Value

KTU has been in the marine industry for more than 30 years.



KTU has been in the marine industry for more than 30 years. It was originally established in 1982 as a humble marine workshop at Jalan Kakap in Jakarta. A shipyard in Marunda was soon acquired with its initial focus on wooden fishing vessels.

KTU Shipyard built its first shipyard at Sagulung, Batam in 2000 and Sekupang, Batam in 2005. In 2019, KTU Shipyard purchased its newest yard at Tanjung Riau, Batam, previously PT. Britoil Offshore.

The rapid growth is primarily due to the strong demand and trust in KTU products and services. Both shipyards are supported by various operational facilities, skilled workforce, and extensive constructional sites up to international standards.

# What We Do ?

KTU Shipyard has a long experience in the field of shipbuilding. Through the decades long journey, we have specialized in a series of products including tugboats, deck cargo barges, oil barges, crane barges, cement carriers and tankers. KTU Shipyard offers a comprehensive range of maintenance, repairs, refits, conversions, and decommissioning. KTU Shipyard will be able to assist you along the entire life cycle of your ships.



## To Date

Our record to date not only represents our reputation as a reliable shipbuilder but to more opportunities coming our way.

**1800**

Vessels

**30**

Years of Experience

**6**

Yard Location



**We build products that fulfil  
your transportation needs.**

# ▶ Tugboats

## One Stop towing solution

Our skills and expertise has gained recognition across the region for our tugboats. KTU Shipyard constructs tugboats from 23M to 32M, from Twin Screw tugs to ASD tugs.

- ▶ **TRA2700**  
by Robert Allan Ltd.



- ▶ **27M Tugboat**  
by KTU Shipyard





Name : KARYA PACIFIC 2232  
Length : 27.0M  
Client : PT. Karya Pacific Shipping

## Technical Specification

Operations	Indonesia	Beam, molded	8.8 m	Propellers	FPP Propeller
Builder	KTU SHIPYARD	Depth, molded	4.0 m	Bollard Pull	29 Tonnes
Designer	Robert Allan Ltd	Draught	3.0 m	Top Speed	15 knots
Design	TRAdler 2700	Gross tonnage	245 GT	Accommodation	For 12 Men
Length, oa	27.0m	Main engines	2xYanmar 6EY17w 837 kW at 1,450 rpm		





Name : SEREIA 78  
Length : 27.0M  
Client : PT. Manajemen Kapal Eurasia



## Technical Specification

Operations	Indonesia	Beam, molded	8.8 m	Propellers	FPP Propeller
Builder	KTU SHIPYARD	Depth, molded	4.0 m	Bollard Pull	20 Tonnes
Design	27.0 m	Draught	3.0 m	Top Speed	12 knots
Length, oa	27.0 m	Gross tonnage	245 GT	Accommodation	For 12 Men
		Main engines	2xYanmar 6EY17w 837 kW at 1,450 rpm		



## Pusher Tug



AMADEUS 1

## Harbour Tug



TRANSKO DARA 3205

## Utility Tug



MBP 3232

## ► Barges

# World-class barge builder

KTU Shipyard has built barges since our doors opened in 2001. Our barges can be seen throughout the country, transporting all kinds of cargo.

Our long-lasting quality and attractive pricing puts us at the top of the barge industry.



## Over 1000 barges delivered

Our in house design team has been refining its designs for barges for over two decades. Our production for barges has exceeded over 1000 units and counting.

## ► Deck Cargo Barge

Up to 2024, KTU Shipyard has built various sizes and design of barges. Ranging from flat top barge, oil barge, crude palm oil, hatch barge and accommodation barges.

Our custom build barges cater to the transportation of timber, coal, cement, and more.



## Oil Barge ◀

Our oil barge production has also been a core product for KTU as it help facilitate the logistic for palm oil plantations nationwide.



## ► Crane Barge

KTU Shipyard has partnered with companies like MACGREGOR and Liebherr for its lifting equipment. We make sure to work with world-class and reliable vendors to ensure reliability and safety as well as develop a long-lasting partnership.



## Technical Specification

<b>Model</b>	Crane Barge	<b>Length, oa</b>	68.40 m	<b>Load/Last</b>	Grab 50T/Cargo 52,5
<b>Classification</b>	ABS	<b>Breadth, moulded</b>	24 m		Ttt
<b>Gross Tonnage</b>	2500	<b>Depth, moulded</b>	4.8 m	<b>Complement</b>	For 21 Persons
<b>Deck Load</b>	10.0 tons per m2 68.40m	<b>Machinery</b>	MACGREGOR Deck Unit; K%036 -4HD;2014,440V/60Hz Radius:7M-36M		



# ► General Cargo

## 4400 DWT MPV GENERAL CARGO

KTU Shipyard has built several versions of general cargos over the years.

In 2020, KTU Shipyard partnered with Groot Ship Design to construct various versions of general cargo vessels to cater to both domestic and international market.



## By Groot Ship Design

Designed by renowned Naval Architect, Groot Ship Design, KTU Shipyard is constructing 4400 DWT MPV Gearless General Cargo for both domestic and international market.



## Technical Specification

<b>Operations</b>	Indonesia & Europe	<b>Breadth, molded</b>	14.4 m	<b>Aux Engine</b>	3x Baudouin 6M16
<b>Builder</b>	KTU SHIPYARD	<b>Depth, molded</b>	7.1 m		260KVA, 1800 RPM
<b>Designer</b>	Groot Ship Design	<b>Draught</b>	5.18 m	<b>Speed</b>	10 knots at 4 mts laden
<b>Design</b>	4400 DWT MPV	<b>Cargo Capacity</b>	5.433 m3	<b>Accommodation</b>	For 12 Men
<b>Length, oa</b>	93.5m	<b>Main engines</b>	1x Hanshin LH28LRG 1.176 kW at 395 rpm		



## ► General Cargo



## 5000 DWT Cement Carrier

Each vessel powered by two Yanmar 6EY22AW diesel engine, delivering a staggering 1600 of pure horsepower. The vessel was specifically designed to carry up to 5000 tonnes of cement cargo in two separate tanks with MACGREGOR Cement Handling System.

## Design by Sasaship

Designed by Singapore marine firm consultant, Sasaship, our team at KTU Shipyard has built this 5000DWT cement carrier. Each vessel is 89.6 meters long with a beam of 20 meters and a scantling draught of 7 meters.



## Technical Specification

**Model** Cement Carrier  
**Builder** KTU SHIPYARD  
**Classification** BKI  
**Capacity** 5000 DWT  
**Length, oa** 89.6m

**Breath, molded** 20 m  
**Depth, molded** 7.1 m  
**Draught** 5 m  
**Gross tonnage** 2999  
**Main engines** 2x YANMAR 6EY22AW  
1600 HP @900 RPM

**Propellers** FPP 4 Blades,  
Magenesse bronze,  
Japan  
**Design Speed** 10 knots  
**Accommodation** For 14 Men

# ► Tanker



Over the years, we have constructed 4 units of Tankers from 5000-6500DWT. Designed by Malaysia marine consultant, United Design. Our tankers itself measures 89.92 – 108 meters in length, has a beam of 16 meters, and a scantling draught of 8 meters.

## Technical Specification

Type	Tanker	Breadth	19.20 m	Propellers	FPP 4 Blades,
Builder	KTU SHIPYARD	Depth	9.30 m		Manganese Bronze
Designer	United Design	Draught	6 m	Deadweight	6500 Tons
Classification	ABS	Main engines	2x Hanshin	Speed	12 knots
Length, oa	108m		LH46L/2942 kw/200 RPM	Accommodation	For 24 Persons





## Sagulung Yard ◀

Our Sagulung Shipyard is our biggest shipyard in Batam, Indonesia. It is home to our headquarters in Batam and has a total area of 36 Ha of production and launching facilities.

We are able to accommodate up to 24 units of tugboats and 42 barges at a single time.

KTU Shipyard, Sagulung



## Sagulung Yard ◀

Our Sagulung Shipyard is our biggest shipyard in Batam, Indonesia. It is home to our headquarters in Batam and has a total area of 36 Ha of production and launching facilities.

We are able to accommodate up to 24 units of tugboats and 42 barges at a single time.

KTU Shipyard, Sagulung



## ► Workshops

Our Sagulung facility is also equipped with modernized equipment and custom workshops for all our production needs.

From steel work, fabrication and outfitting, KTU Shipyard has an in house team to streamline our production schedule.

Our team consist of skilled and trained individuals to tackle any projects we take.

▼ Auto Blasting



▼ CNC Workshop



▼ Outfitting



▲ Bending & Shearing



▲ Lathe Workshop



▲ Fabrication



## ► Tanjung Riau Yard

This highly advanced yard features a 12m PEMAMEK assembly line, a 400 Ton crane by KONECRANES.

KTU Shipyard, Tanjung Riau has a 400 Ton capacity gantry crane by KONECRANES. The crane has a span of 110 meter and lifting height of 51.12 meters. This has been highly efficient in streamlining our production process.



KTU Shipyard, Tanjung Riau



## ► Workshops

The shipyard have both opened and covered facilities available for short-term or long-term storage requirement.

Opened areas are compacted levelled, accessible by main road and is next to the wharf. Covered locations are well ventilated and insulated against environmental elements.

## ► Sekupang Yard

Sekupang is KTU's first yard location in Batam in 2001.

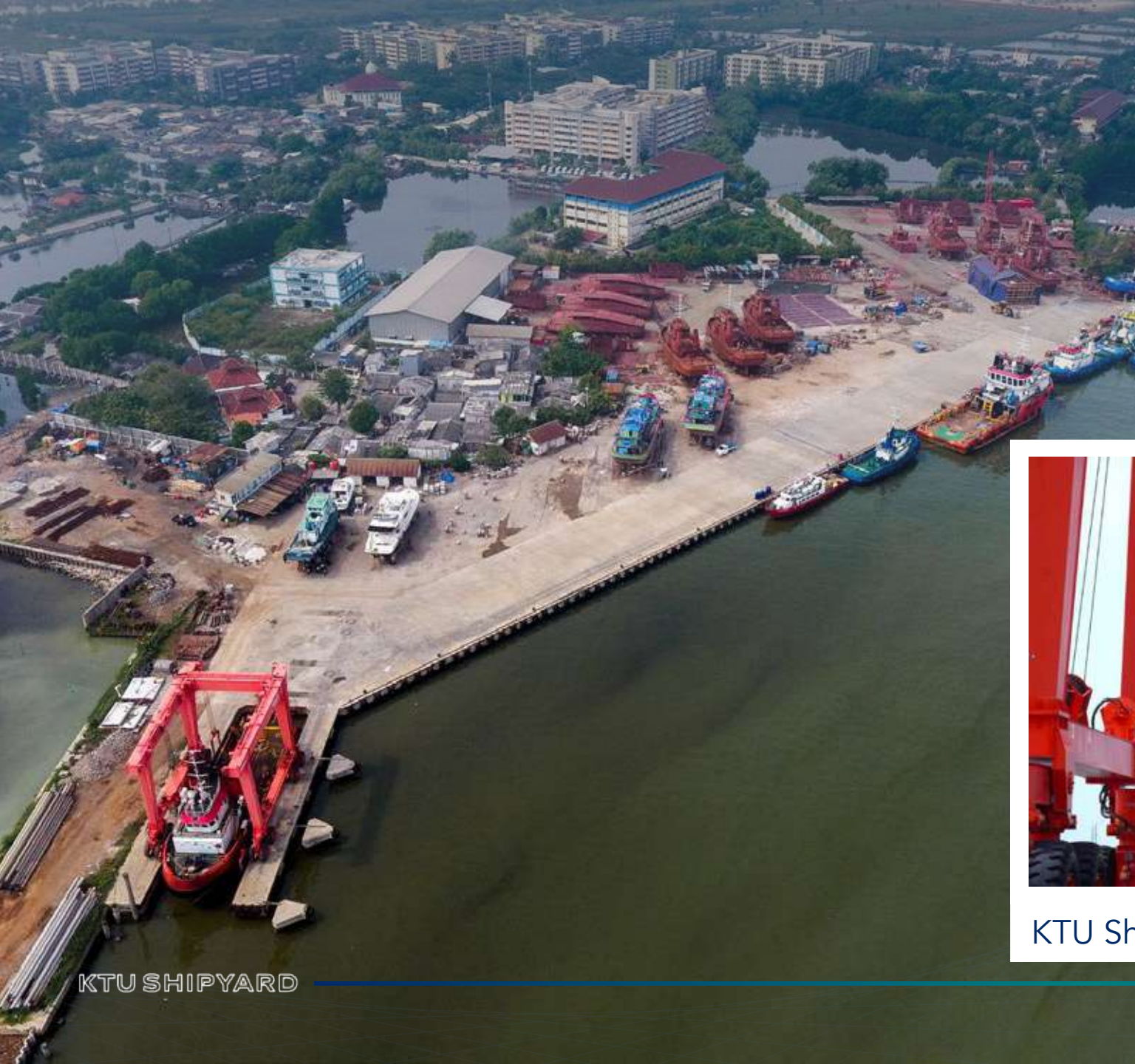
It spans over 22 Ha of area and is focused on a large portion of KTU's barges production.



KTU Shipyards, Sekupang 2



KTU Shipyards, Sekupang 1



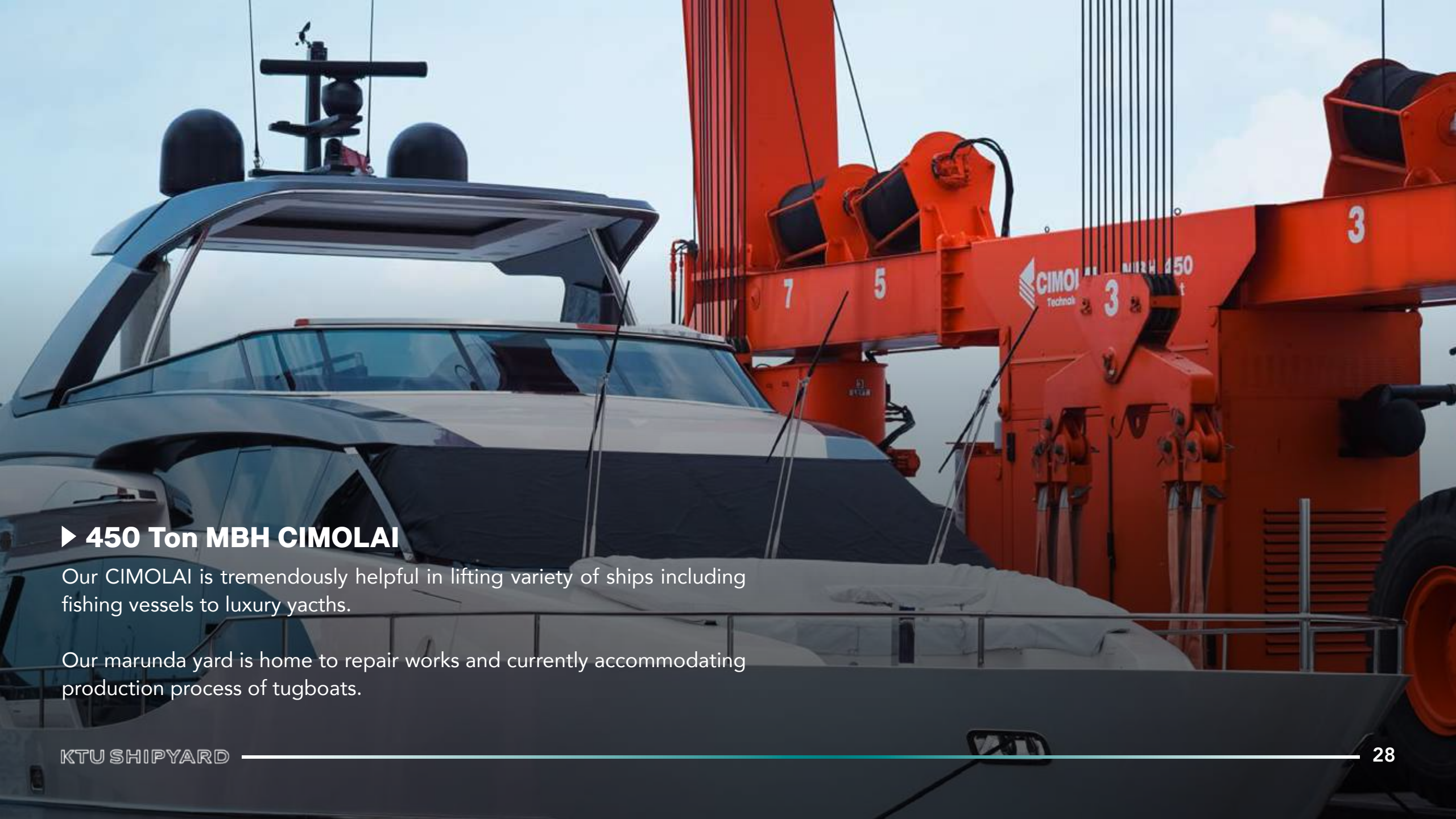
## ► Marunda Yard

KTU Shipyard Marunda is located in Jakarta Indonesia.

Its focus are on tug newbuilding and repair works that is assisted with our 450 Ton MBH by CIMOLAI.



KTU Shipyard, Marunda



## ► 450 Ton MBH CIMOLAI

Our CIMOLAI is tremendously helpful in lifting variety of ships including fishing vessels to luxury yachts.

Our marunda yard is home to repair works and currently accommodating production process of tugboats.

## ► PT. DOKMOR OPTIMA KAJAYAN

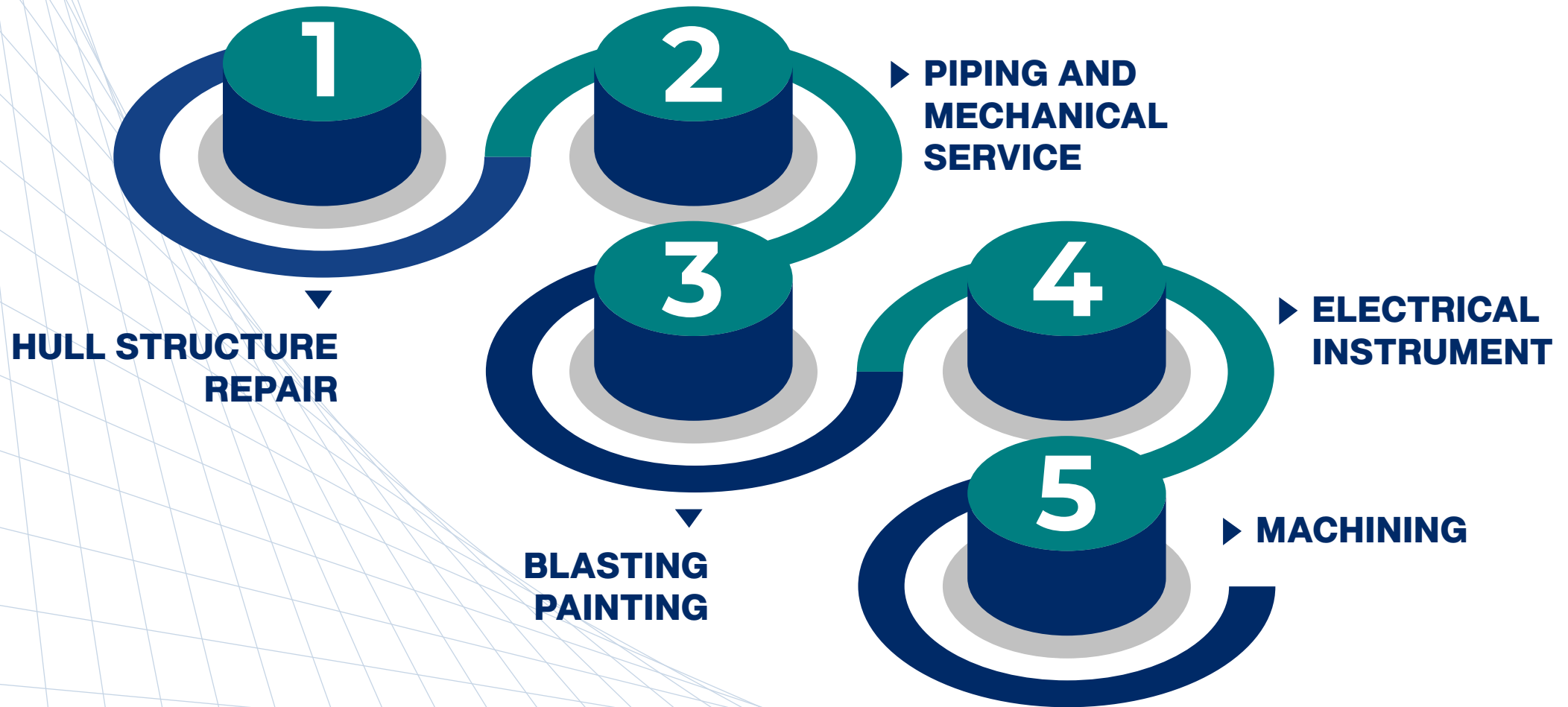
In 2021, PT. DOKMOR opened in Lapuko, South East Sulawesi with its main agenda of repairing vessel around the region.

DOKMOR is also in a strategic position in terms of distance from two major players in the nickel industry, PT. TSINGSHAN Steel Indonesia and PT.VDNI.

Our repair works are tugboats and barges.

DOKMOR, Yard

## ▶ PT. DOKMOR SERVICE



## ► OUR CLIENTS





## ▶ Headquarters

Jakarta, Indonesia  
Jl. Kali Besar Barat, No. 37, RT 6/RW 3, Roa Malaka, Tambora  
Jakarta Barat, Jakarta 11230  
T : +62 21 6910382  
E : info@ktushipyard.com

## ▶ KTU Sagulung

Batam, Indonesia  
Sungai Binti, Sagulung, Batam City, Riau Islands 29434  
T : +62 778 8075060

## ▶ KTU Tanjung Riau

Batam, Indonesia  
Jl. Tanjung Riau, Kawasan Industri Sekupang, Batam City  
Riau Islands 29432  
T : +62 778 327691

## ▶ KTU Sekupang

Batam, Indonesia  
Jl. RE. Martadinata KM2, Batam City, Riau Islands 29434  
T : +62 778 6910382

## ▶ KTU Marunda

Jakarta, Indonesia  
RT 3/RW 7, Marunda, Cilincing, North Jakarta, DKI Jakarta  
T : +62 816 1940 936 (WhatsApp Only)

## ▶ PT. DOK

Sulawesi, Indonesia  
Lingkung V Labutu, Kec. Moramo, Kab. Konawe Selatan, Sulawesi Tenggara  
T : +62 878 1253 3180 (WhatsApp Only)  
+62 811 696 606 (WhatsApp Only)